

## Lake Profile Brief

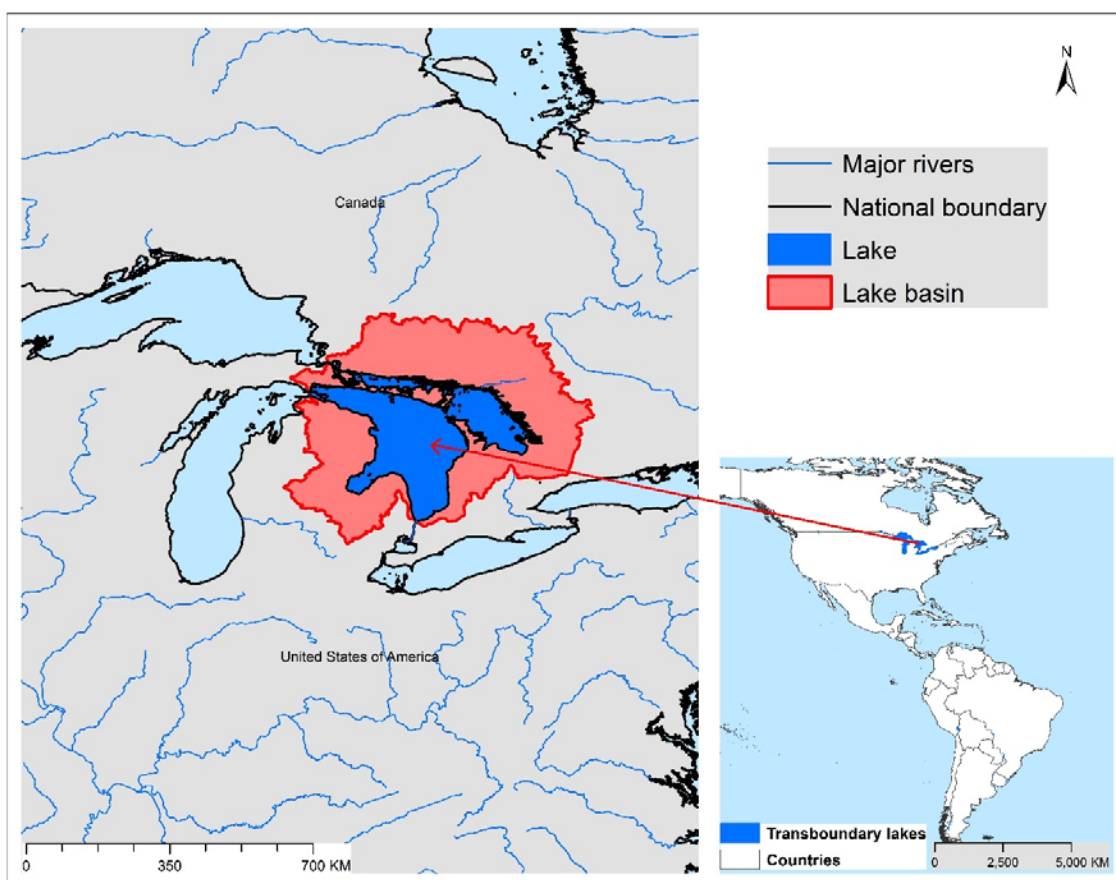
This is based on the results of Multiple Lake Threat Assessment and its Scenario Analysis. Refer to the Technical Report for details.



### Lake Huron

### Geographic Information

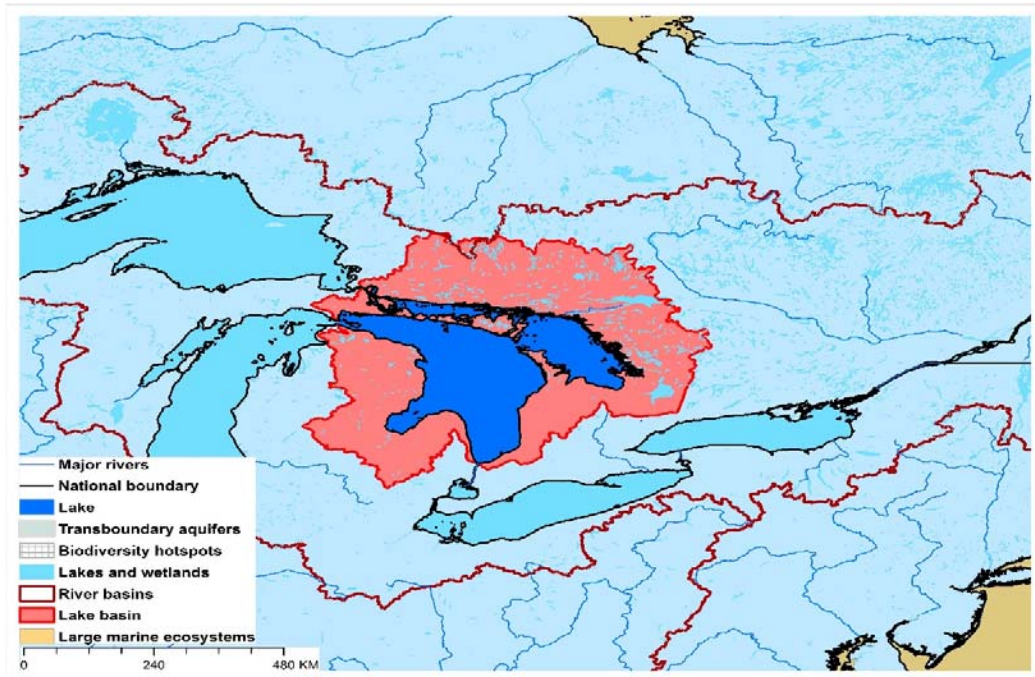
Lake Huron is the second largest (by area) and third largest (by volume) of the five Laurentian Great Lakes, and the fourth largest (by area) in the world. With a water volume of 3,540 km<sup>3</sup>, it also contains the world's largest freshwater island. With 30,000 islands, it has the largest shoreline length of the Great Lakes, and a relatively large drainage basin, compared to the other Great Lakes. It is hydrologically connected to Lake Michigan by the Straits of Mackinac, and lies at the same water level. If both lakes were considered an aggregated waterbody, it would be the world's largest freshwater lake. Its ecology has been degraded over time by a combination of overfishing, pollution and invasive species. Originally managed within the context of the 1909 Boundary Waters Treaty between the USA and Canada, the lake also is included in the Great Lakes Water Quality Agreement between the two countries, including concerted efforts directed to controlling non-point source pollution of all the Great Lakes.



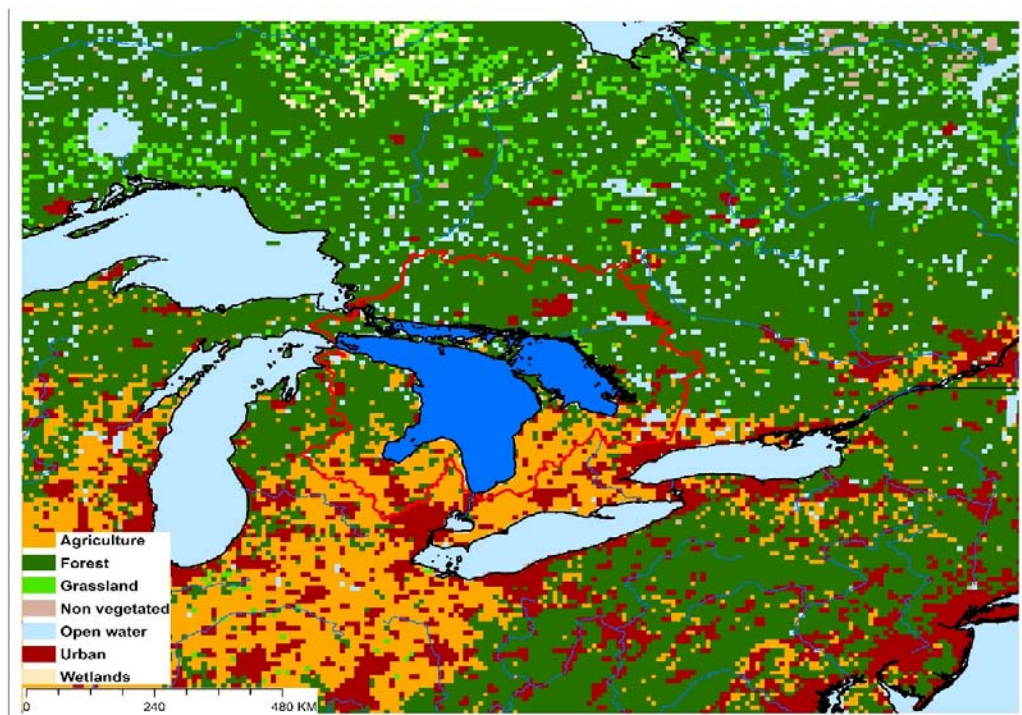
<b>TWAP Regional Designation</b>	Northern, Western & Southern America	<b>Lake Basin Population (2010)</b>	8,365,188
<b>River Basin</b>	St. Lawrence	<b>Lake Basin Population Density (2010; # km<sup>-2</sup>)</b>	48.7
<b>Riparian Countries</b>	USA, Canada	<b>Average Basin Precipitation (mm yr<sup>-1</sup>)</b>	828.2
<b>Basin Area (km<sup>2</sup>)</b>	175,435	<b>Shoreline Length (km)</b>	2,367
<b>Lake Area (km<sup>2</sup>)</b>	58,535	<b>Human Development Index (HDI)</b>	0.94
<b>Lake Area:Lake Basin Ratio</b>	0.334	<b>International Treaties/Agreements Identifying Lake</b>	Yes



### Lake Huron Basin Characteristics



(a) Lake Huron basin and associated transboundary water systems



(b) Lake Huron basin land use

## Lake Huron Threat Ranking

A serious lack of global-scale uniform data on the TWAP transboundary in-lake conditions required their potential threat risks be estimated on the basis of the characteristics of their drainage basins, rather than in-lake conditions. Using basin characteristics to rank transboundary lake threats precludes consideration of the unique features that can buffer their in-lake responses to basin-derived disturbances, including an integrating nature for all inputs, long water retention times, and complex, non-linear response dynamics.

The lake threat ranks were calculated with a spreadsheet-based interactive scenario analysis program, incorporating data and information about the nature and magnitude of their basin-derived stresses, and their possible impacts on the sustainability of their ecosystem services. These descriptive data for Lake Huron and the other transboundary lakes included lake and basin areas, population numbers and densities, areal extent of basin stressors on the lake, data grid size, and other components considered important from the perspective of the user of the data results. The scenario analysis program also provides a means to define the appropriate context and preconditions for interpreting the ranking results.

The Lake Huron threat ranks are expressed in terms of the Adjusted Human Water Security (Adj-HWS) threats, Reverse Biodiversity (RvBD) threats, and the Human Development Index (HDI) score, as well as combinations of these indices. However, it is emphasized that, being based on specific characteristics and assumptions regarding Lake Huron and its basin characteristics, the calculated threat scores represent only one possible set of lake threat rankings. Defining the appropriate context and preconditions for interpreting the lake rankings remains an important responsibility of those using the threat ranking results, including lake managers and decision-makers.

**Table 1. Lake Huron Relative Threat Ranks, Based on Adjusted Human Water Security (Adj-HWS) and Reverse Biodiversity Threats, and Human Development Index (HDI) Score**

*(Estimated risks: red – highest; orange – moderately high; yellow – medium; green – moderately low; blue – low)*

Adjusted Human Water Security (Adj-HWS) Threat Score	Relative Adj-HWS Threat Rank	Reverse Biodiversity (RvBD) Threat Score	Relative RvBD Threat Rank	Human Development Index (HDI) Score	Relative HDI Rank
0.42	51	0.53	36	0.93	50

It is emphasized that the Lake Huron rankings above are discussed here within the context of the management and decision-making process, rather than as strict numerical ranks. Based on its geographic, population and socioeconomic assumptions used in the scenario analysis program, the calculated Adj-HWS score for Lake Huron indicates a low threat rank compared to other priority transboundary lakes.

The Reverse Biodiversity (RvBD) for Lake Huron, which is meant to describe its biodiversity sensitivity to basin-derived degradation, places the lake in a moderately low threat rank, compared to the other

transboundary lakes. Management interventions directed to improving the biodiversity status must be viewed with caution, however, since we lack sufficient knowledge and experience to accurately predict the ultimate impacts of biodiversity manipulations and preservation efforts. Further, the RvBD scores indicate the relative sensitivity of a lake basin to human activities, and high threat scores *per se* do not necessarily justify management interventions. Such interventions may actually increase biodiversity degradation, noting that many developed countries have already fundamentally degraded their biodiversity because of economic development activities. Thus, activities undertaken to address the Adj-HWS threats may actually degrade the biodiversity status and resources, even if the health and socioeconomic conditions of the lake basin stakeholders are improved as a result of better conditions, thereby increasing stakeholder resource consumption.

The relative Human Development Index (HDI) places the Lake Huron basin in a low threat rank in regard to its health, educational and economic conditions.

**Table 2. Lake Huron Threat Ranks, Based on Multiple Ranking Criteria**  
*(Scores for Adj-HWS, RvBD and HDI ranks are presented in Table 1; the ranks may differ in some cases because of rounding of tied threat scores; Estimated risks: red – highest; orange – moderately high; yellow – medium; green – moderately low; blue – low)*

Adj-HWS Rank	HDI Rank	RvBD Rank	Sum Adj-HWS + RvBD	Relative Threat Rank	Sum Adj-HWS + HDI	Relative Threat Rank	Sum Adj-HWS + RvBD + HDI	Overall Threat Rank
51	50	36	87	45	101	51	137	46

When multiple ranking criteria are considered together in the threat rank calculations, the Adj-HWS and HDI scores considered together place Lake Huron in the lower quarter of the threat ranks. The relative threat is similar when the Adj-HWS and RvBD threats are considered together. Considering all three ranking criteria together, Lake Huron exhibits a low threat ranking.

Further, a series of parametric sensitivity analyses of the ranking results also was performed to determine the effects of changing the importance of specific criteria on the relative transboundary lake rankings. This analysis involved increasing or decreasing the weights applied to the threat ranks derived from multiple ranking criteria to reassess the relative impacts of the weight combinations on the threat ranks. For example, in determining the sensitivity of the Adjusted Human Water Security (Adj-HWS) and Biodiversity (BD) ranking criteria, the threat rank associated with the first was assumed to be of complete (100%) importance (i.e., rank weight of 1.0), while the other was assumed to be of no (0%) importance (i.e., rank weight of 0.0). The relative importance of the two ranking criteria was then successively changed, with weight combinations of 0.9 and 0.1, 0.8 and 0.2, etc., until the first ranking criteria (Adj-HWS) was assumed to be of no importance (rank weight of 0.0) and the second (BD) was of complete importance (rank weight of 1.0). In the case of Lake Huron, the 0.5 and 0.5 weight combinations for three cases of parametric analysis for Lake Huron resulted in respective threat rankings of 5<sup>th</sup>, 5<sup>th</sup> and 6<sup>th</sup>, respectively, among the total of 7 North American transboundary lakes in the TWAP study (see Technical Report, Section 4.3.3, pp44-48 and Appendix 6(2)).

In essence, therefore, identifying potential management intervention needs for Lake Huron must be considered on the basis of both educated judgement and accurate representations of its situation. A fundamental question to be addressed, therefore, is how can one decide that a given management

intervention will produce the greatest benefit(s) for the greatest number of people in the Lake Huron basin? Accurate answers to such questions for Lake Huron, and other transboundary lakes, will require a case-by-case assessment approach that considers the specific lake situation and context, the anticipated improvements from specific management interventions, and its interactions with water systems to which the lake is linked.